



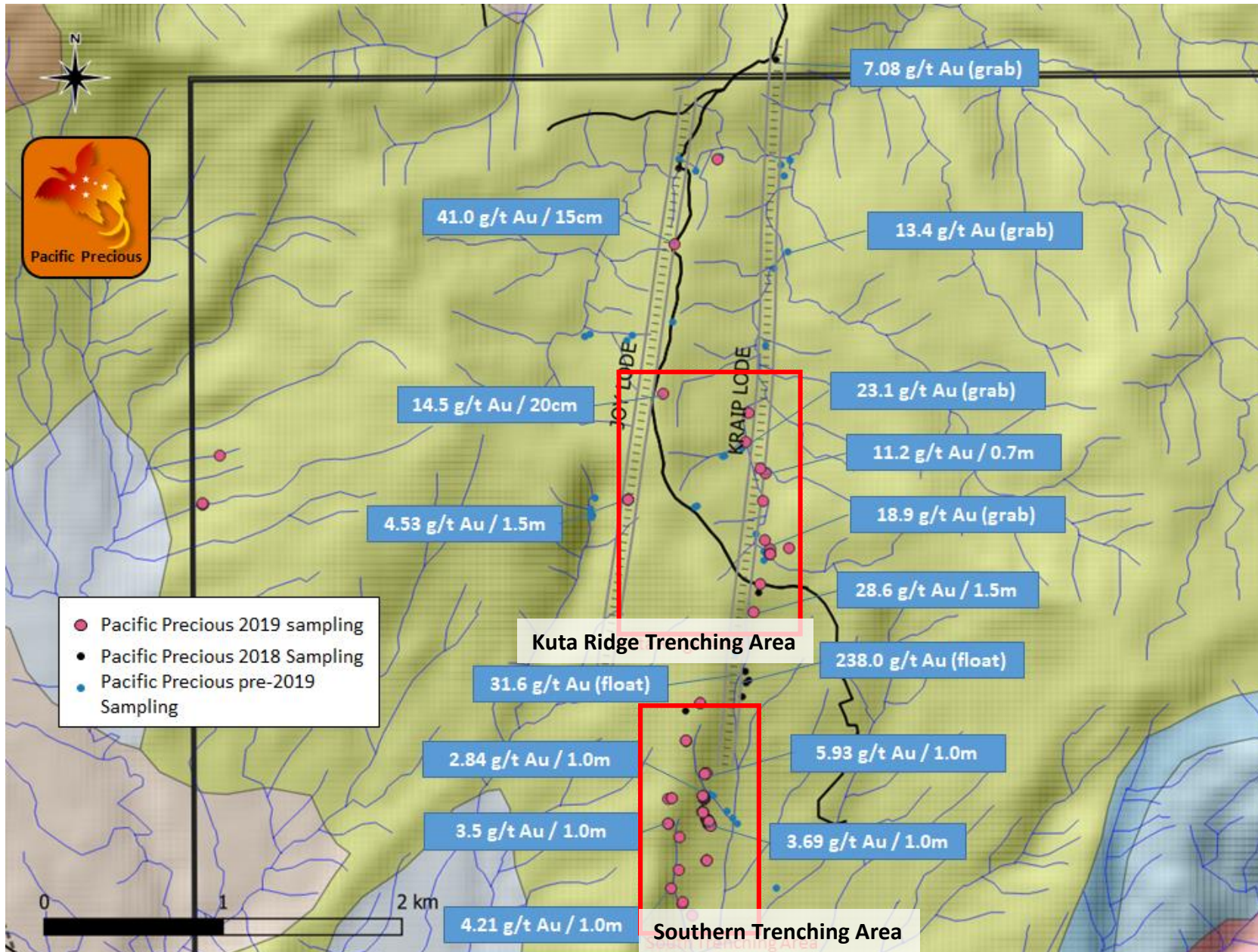
Pacific Precious

Hunting for Gold in Elephant Country

Q4 – 2019 Exploration and Corporate Update

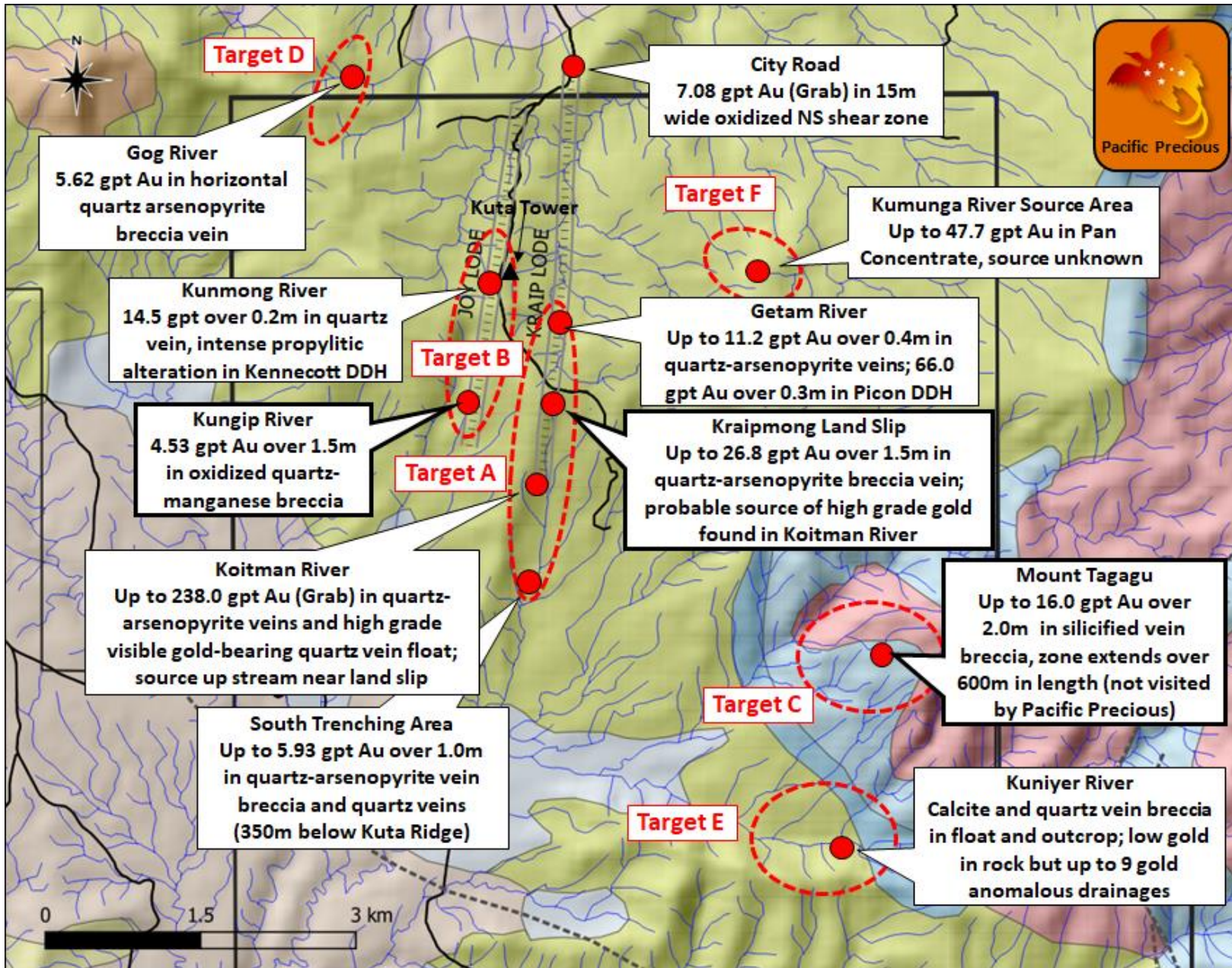


Location of 2019 Trenching & Sampling Program





Priority Targets on Kuta Ridge





Low Sulphide Quartz Veins



Low sulphide quartz veins
from South Trenching Area





Quartz-Arsenopyrite Boulder

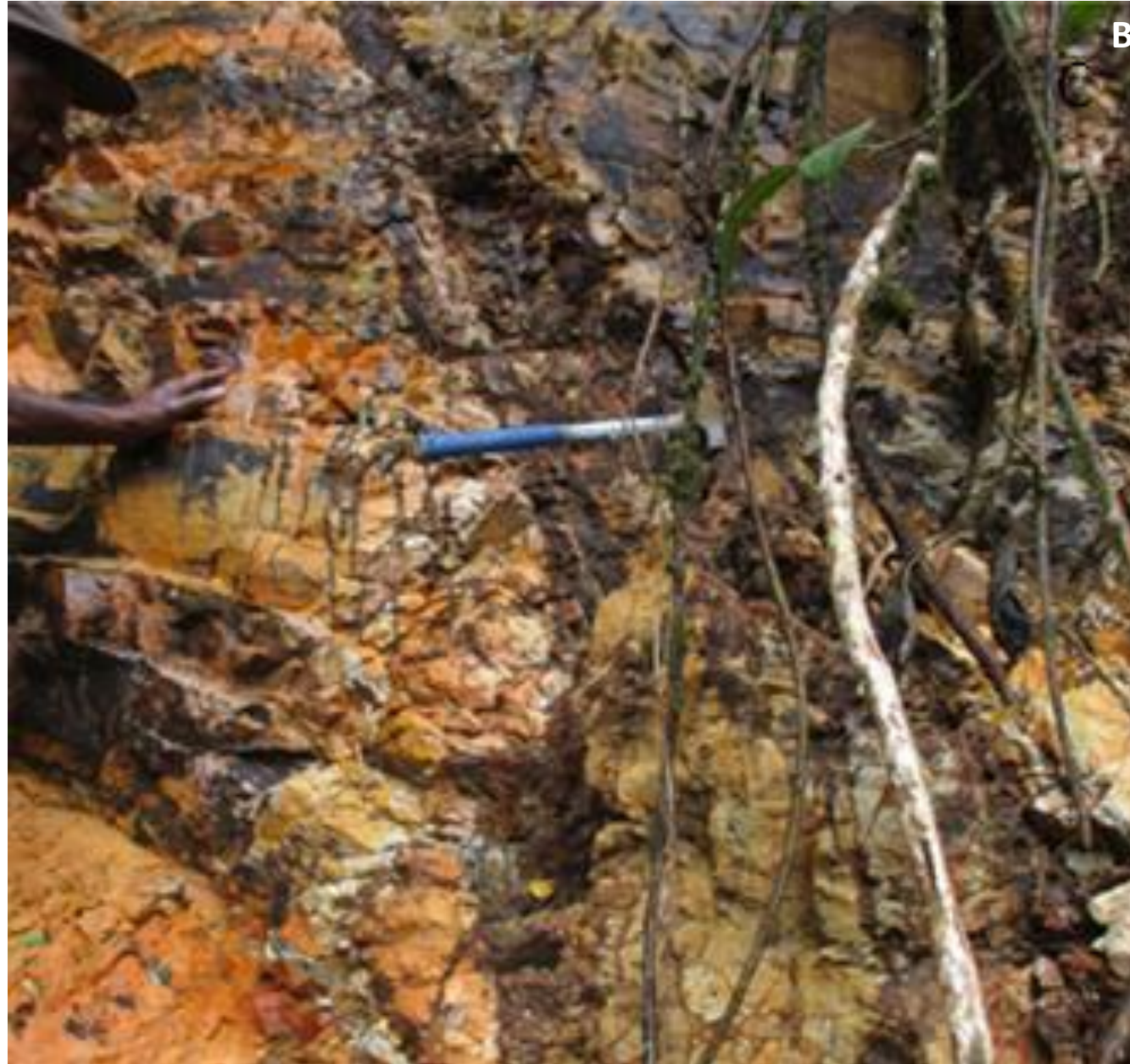


High grade quartz-arsenopyrite boulder from Kraipmong Creek





Oxidized Sulphide Veins



Oxidized low quartz,
high sulphide veins
from Southern
Trenching Area





Quartz-Sulphide Boulder



Quartz-sulphide visible
gold float boulder from
Kraipmong Creek



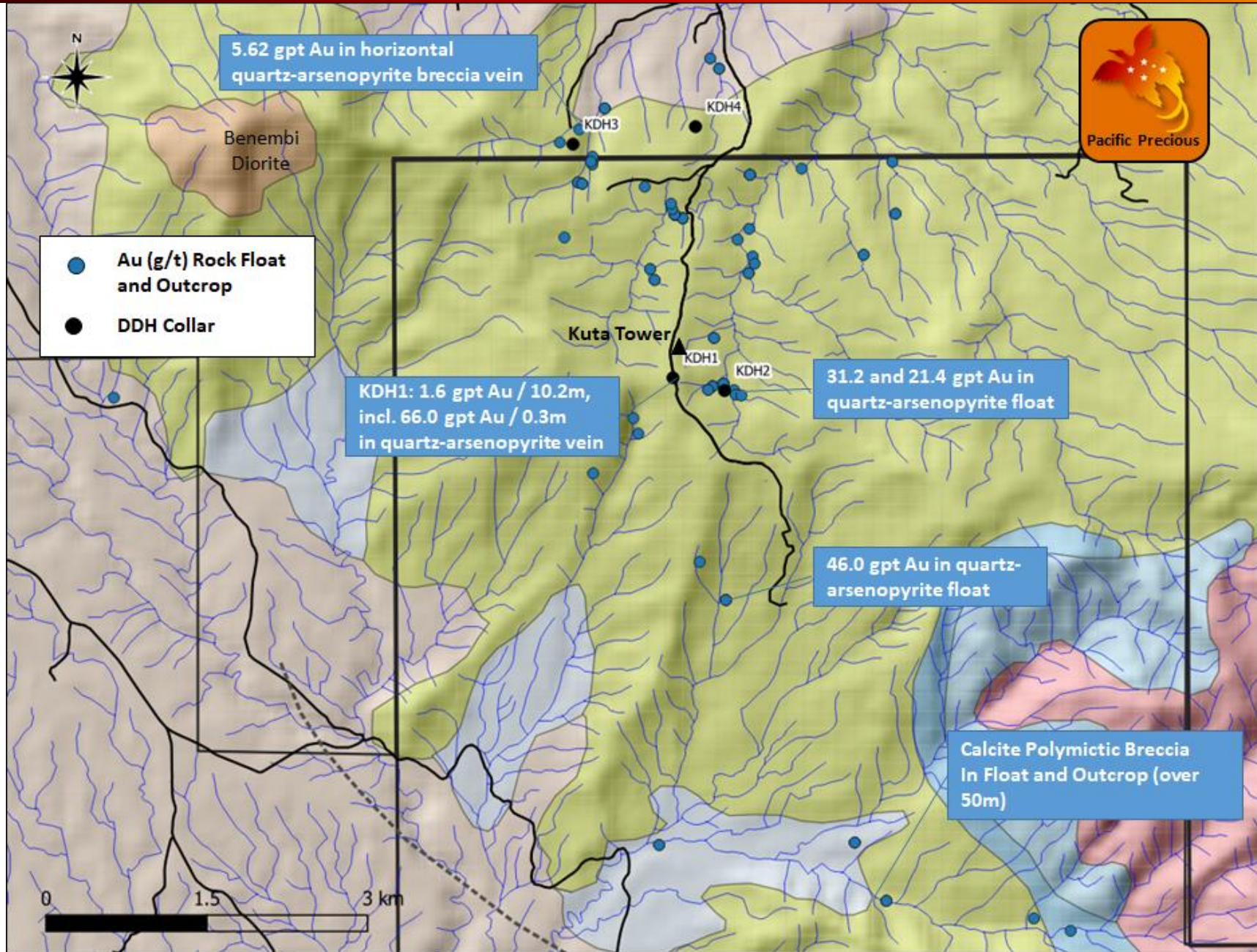


Historical Results – Picon Exploration & Kennecott



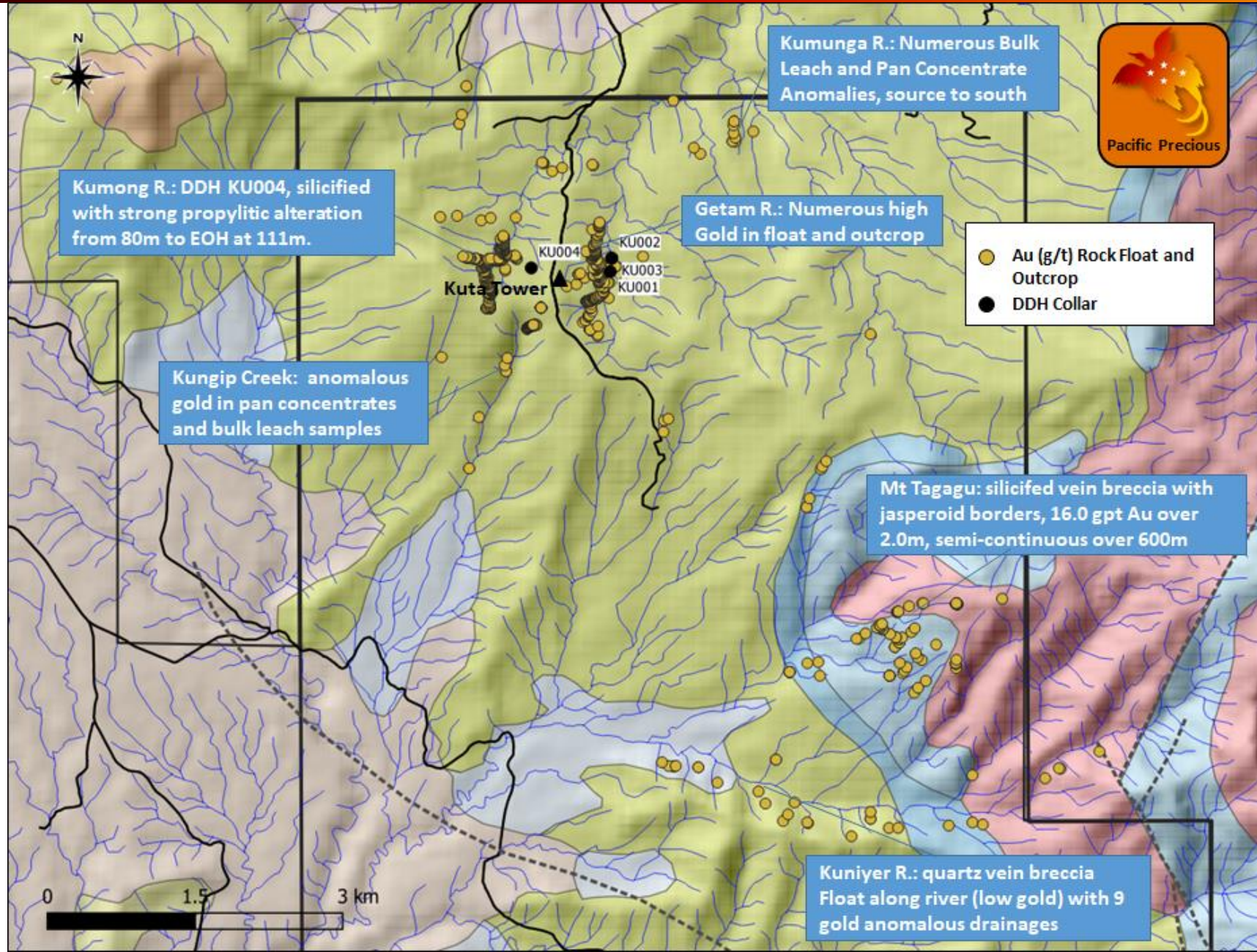


Picon Exploration – 1987 - 1988





Kennecott – 1992 - 1993



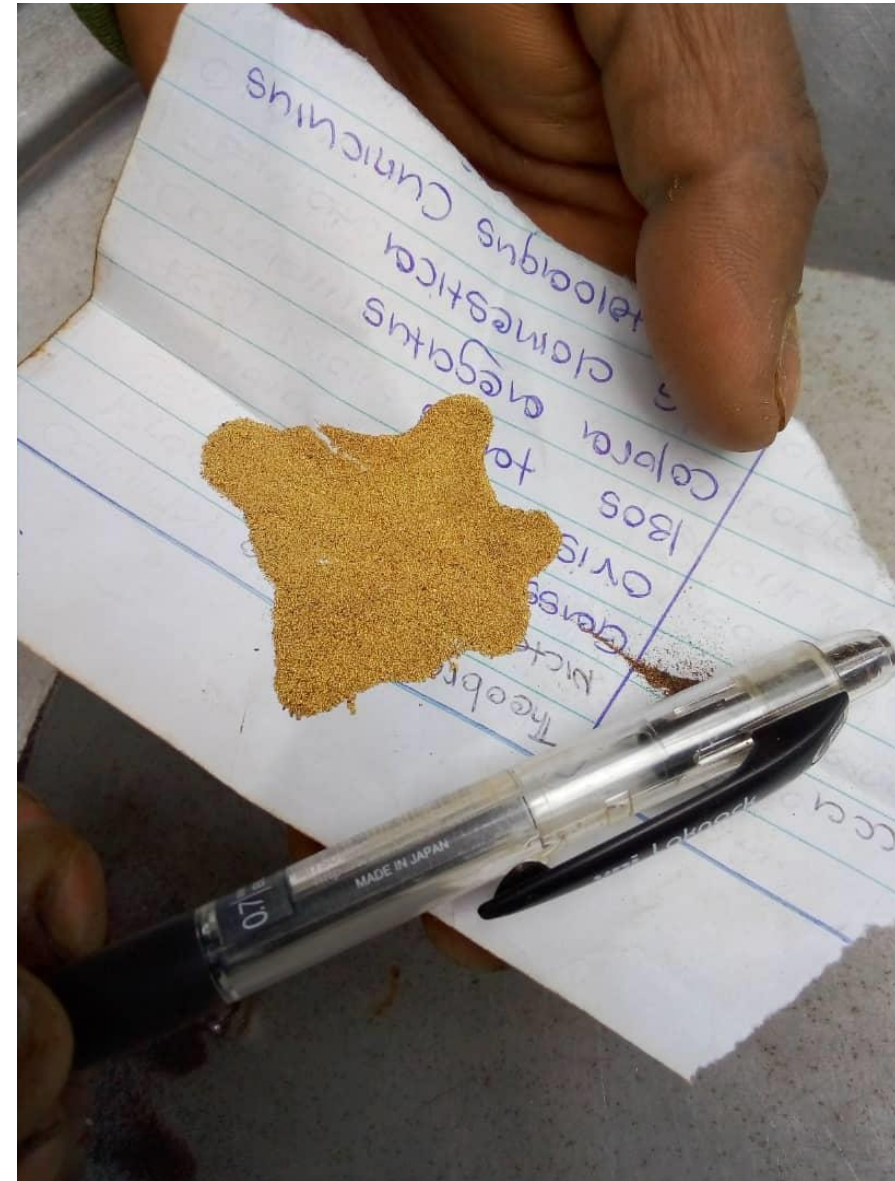


Photos from the Summer 2019 Site Visit





Plenty of Gold in the System...





Outcrop north of permit road-cut of oxidized sulphides in NS structure aligned with East Fault





Walking down towards the southern trenches





Trench #9: North-South Vein System with Oxidized quartz and quartz breccia. 1.80 gpt gold over 5.0 metres, including 2.16 gpt gold over 3.0 metres and 3.69 gpt gold over 1.0 metres





Trench #5: North-south Shear Zone in Saprolite with Quartz fragments. One sample returned 3.5 gpt over 1.0 metres





Trench #8: Quartz breccia and fault gouge. 2.84 gpt gold over 1.0 metres in fault gouge.





North-south quartz vein with partially oxidized massive pyrite. Sample returned 14.5 gpt gold over 0.15 metres





Bleaching of top of Cretaceous sediments at Galag Creek crossing, overlain by tephra





Volcanic and sediments cut by north-south vertical quartz vein with red oxidized sulphide selvages—at Galag Creek crossing





At top of drainage at head of Ambi Creek. North-south oxidized sulphide vein on right side of slump and partially oxidized quartz-arsenopyrite vein on left. CB got 14.8 gpt gold in October 2018









Mineralized Samples





Mineralized Samples

